

ASRock[®]
— Rack —

1U12XL_C622

RPSU

Installation Guide

Version 0.1

November 2017

Copyright©2017 ASRock Rack INC. All rights reserved.

Contents

Chapter 1 Server System Overview

1.1 System Components	---1
1.2 System Front Panel	---4
1.3 System Rear Panel	---4

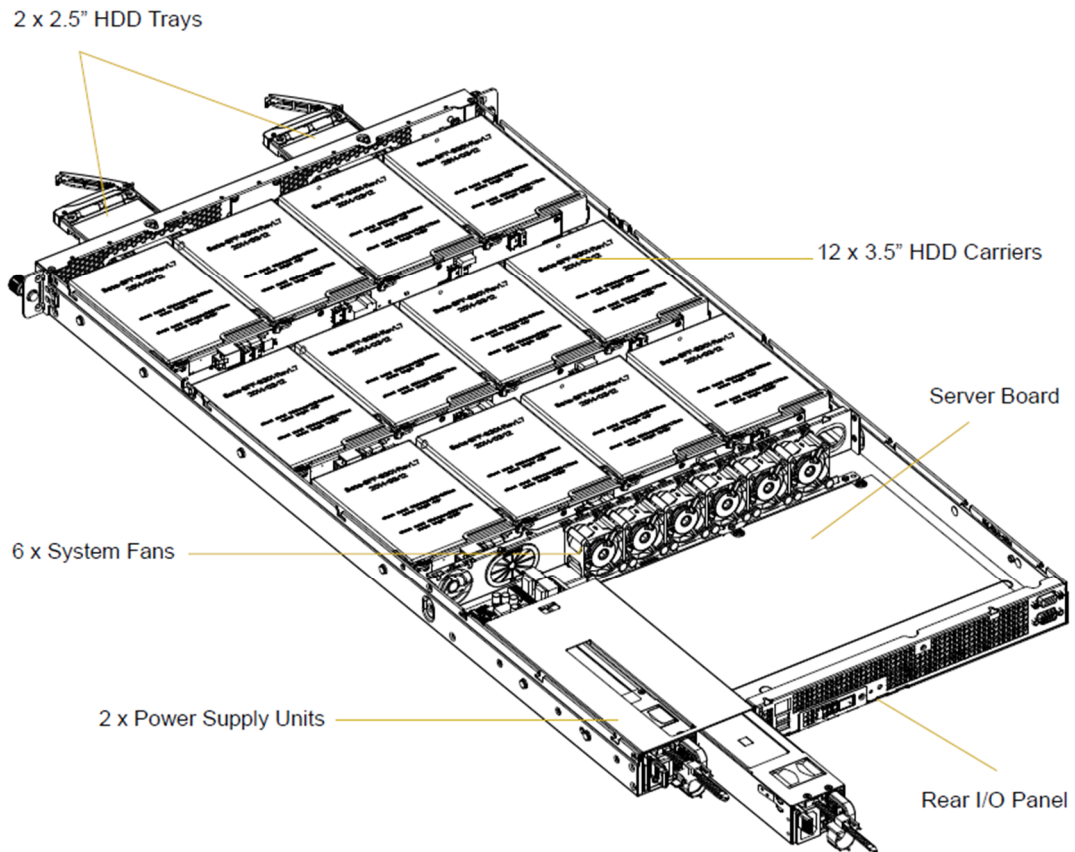
Chapter 2 Replacing Main Board

2.1 Removing Fan	---5
2.2 Removing the Main Board	---5
2.3 Paste the Mylar on chassis	---6
2.4 Installation the Main Board	---7
2.5 Cable Connector Location	---7
2.6 Chassis Cables	---8

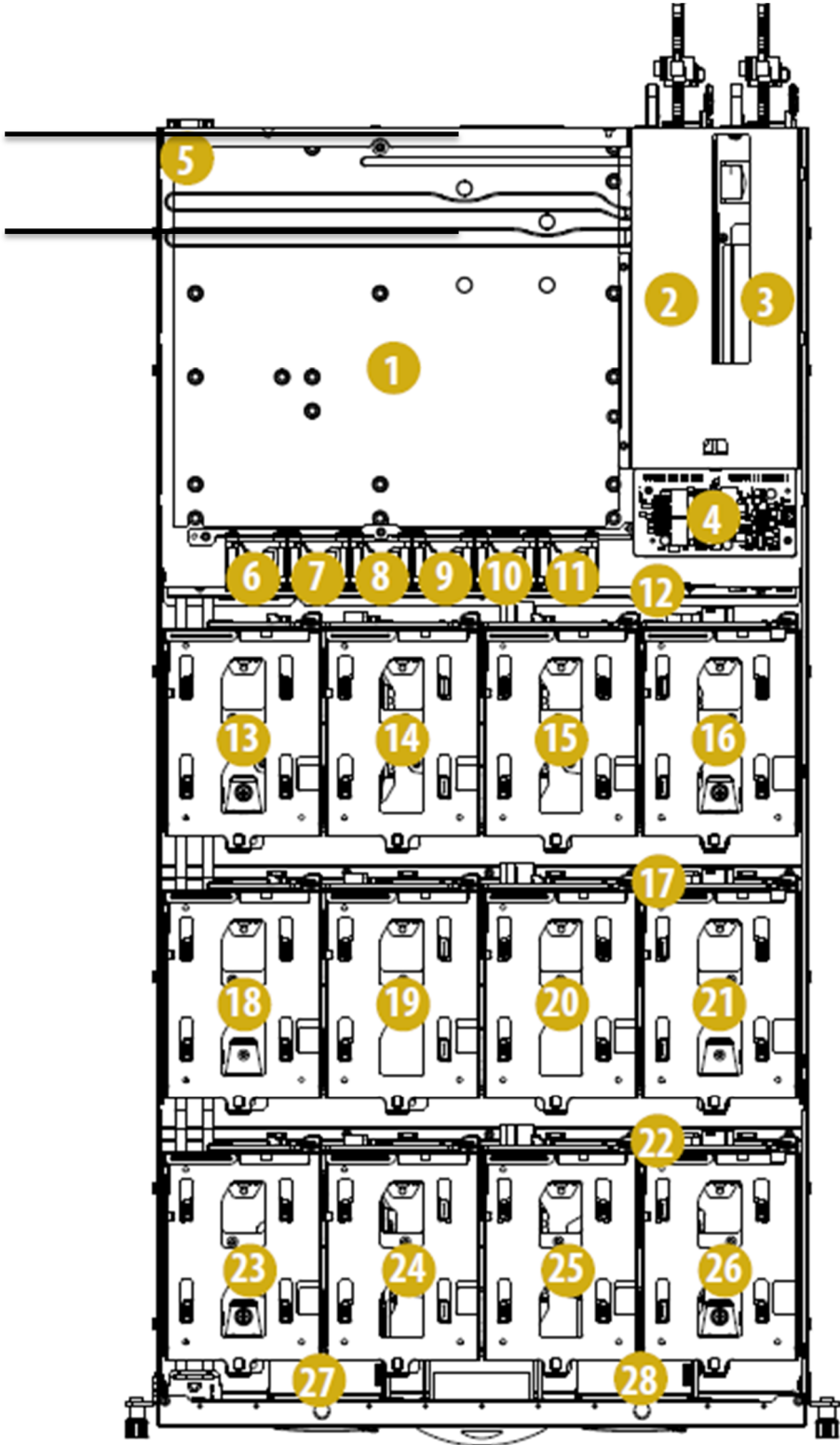
Contact Info	---10
---------------------	-------

CH1. Server System Overview

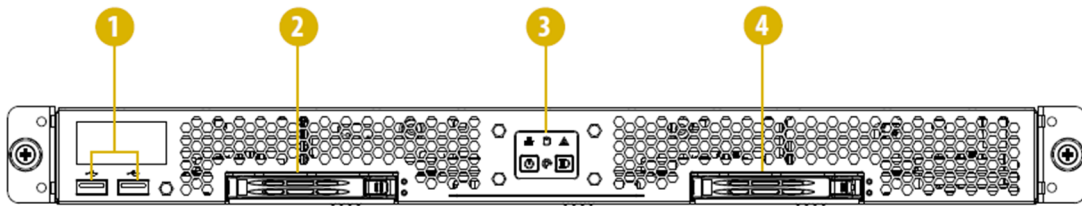
1.1 System Component



No.	From
1	Serverboard
2	Power Supply Unit (PSU) 2
3	Power Supply Unit (PSU) 1
4	Power Distribution Board (PDB)
5	VGA Port
6	System Fan 6
7	System Fan 5
8	System Fan 4
9	System Fan 3
10	System Fan 2
11	System Fan 1
12	HDD Backplane Board (BPB)
13	3.5" HDD 8 (SSATA2)
14	3.5" HDD 9 (SSATA3)
15	3.5" HDD 10 (SSATA4)
16	3.5" HDD 11 (SSATA5)
17	HDD Backplane Board (BPB)
18	3.5" HDD 4 (SATA4)
19	3.5" HDD 5 (SATA5)
20	3.5" HDD 6 (SATA6)
21	3.5" HDD 7 (SATA7)
22	HDD Backplane Board (BPB)
23	3.5" HDD 0 (SATA0)
24	3.5" HDD 1 (SATA1)
25	3.5" HDD 2 (SATA2)
26	3.5" HDD 3 (SATA3)
27	2.5" SATA HDD 1 (Hot-swappable)
28	2.5" SATA HDD 0 (Hot-swappable)

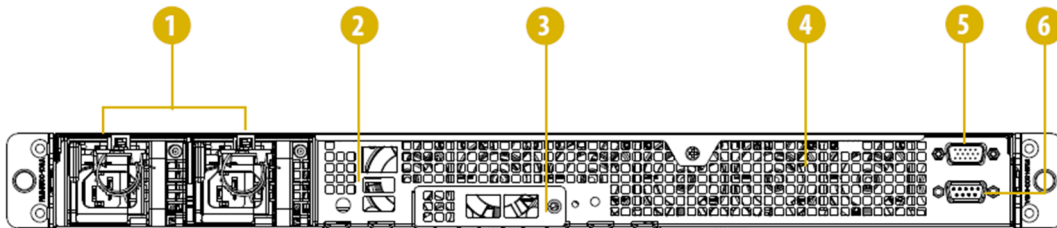


1.2 System Front Panel



No.	Description
1	2 x USB 2.0 Ports
2	2.5" SATA HDD Tray 1 (SSATA1)
3	Control Panel Buttons and LEDs
4	2.5" SATA HDD Tray 0 (SSATA0)

1.3 System Rear Panel



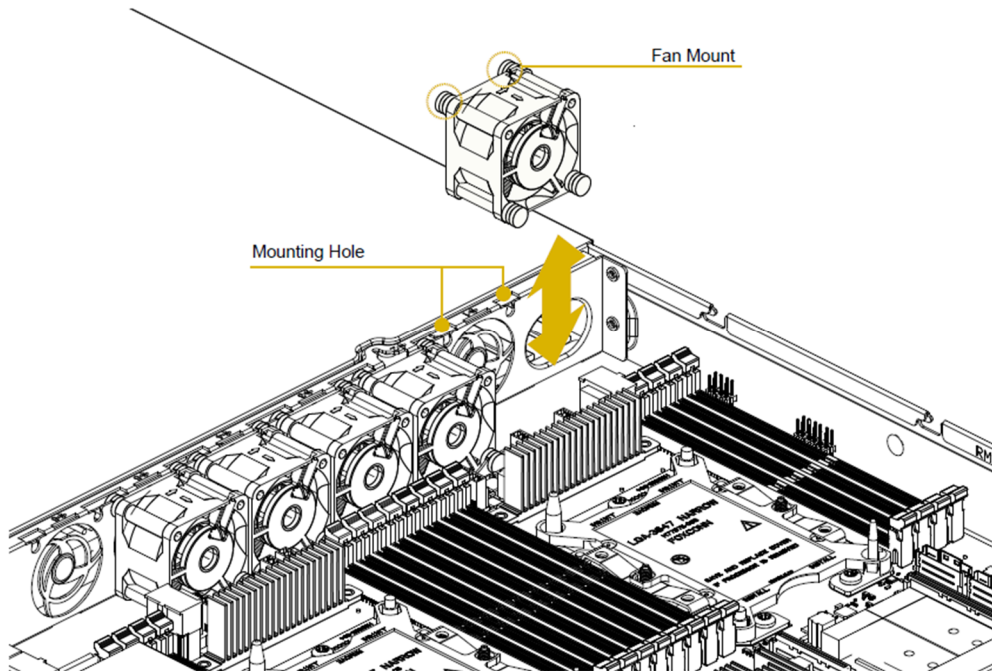
No.	Description
1	2 x Power Supply Units
2	I/O Shield (depends on the specification of the server board)*
3	1 x LAN Mezzanine Card Slot
4	Rear Vent*
5	VGA Port
6	COM Port

*The locations of I/O shield and rear vent may vary depending on the system and server board models.

CH2. Replacing Main Board

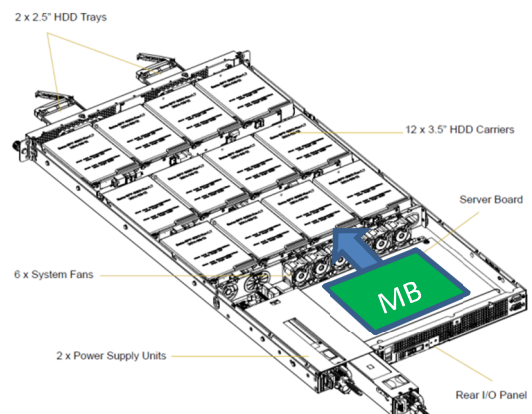
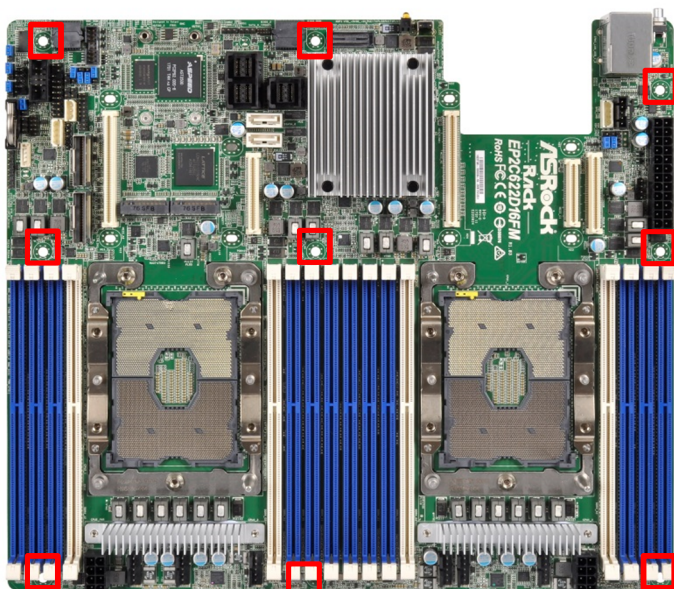
2.1 Removing Fan

1. Unplug the fan connector.
2. Lift up and remove the fan.



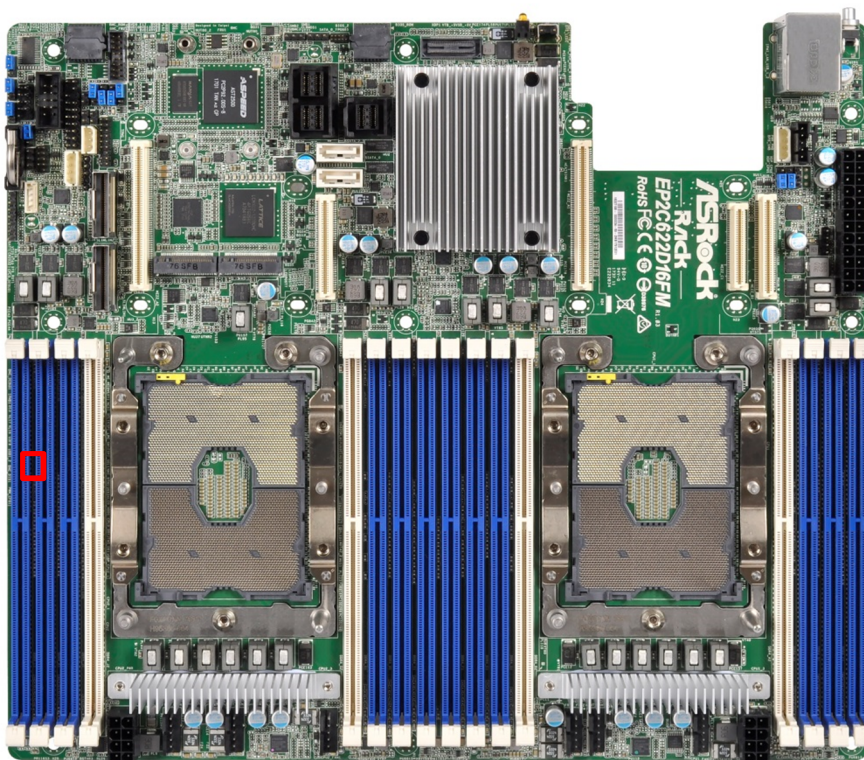
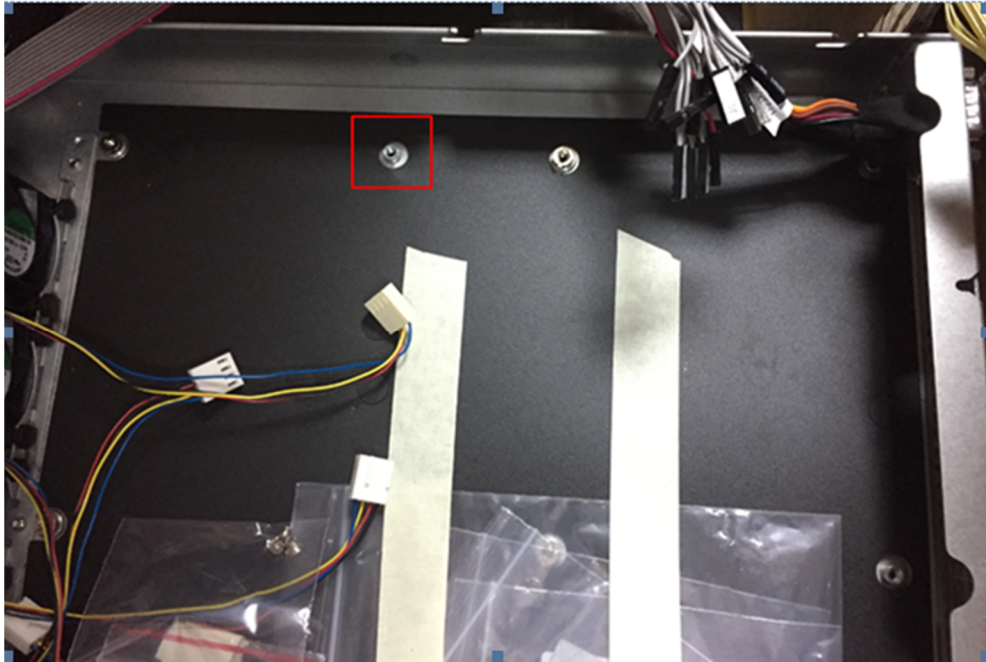
2.2 Removing the Main Board

1. Remove the screws that secure the main board to the chassis.
2. Unplug all the cables connected to the main board.
3. Push main board toward the front side to remove it.



2.3 Paste the Mylar on chassis

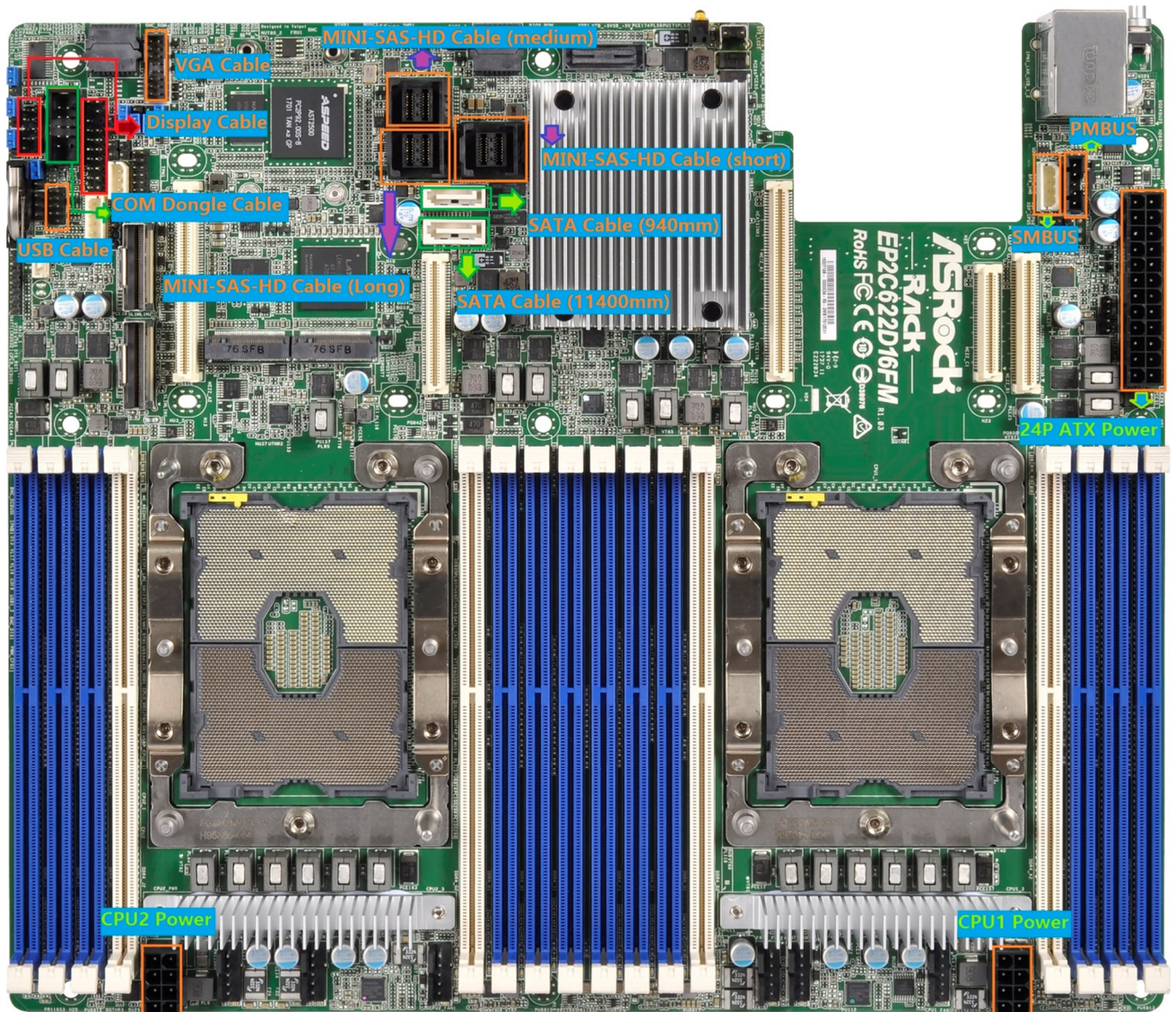
1. Paste the Mylar onto chassis screws locate as below.



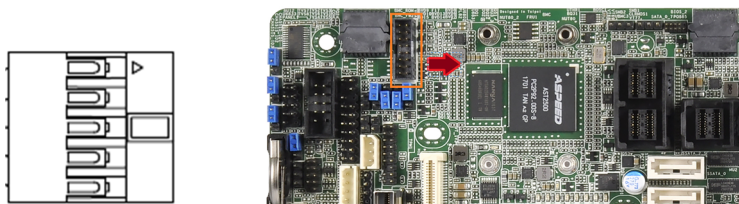
2.4 Installation the Main Board

1. Slide main board toward the rear side of the chassis.
2. Install the fans in the chassis.
3. Secure the main board with screws.
4. Connect the cables to the main board.

2.5 Cable Connector Location

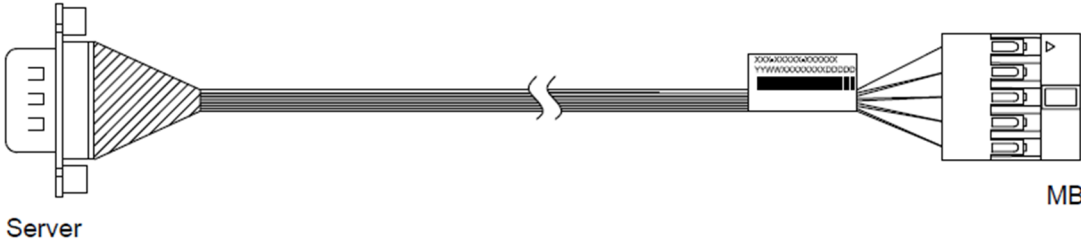


*Note: The arrow symbol on VGA header toward the ASPEED chip.

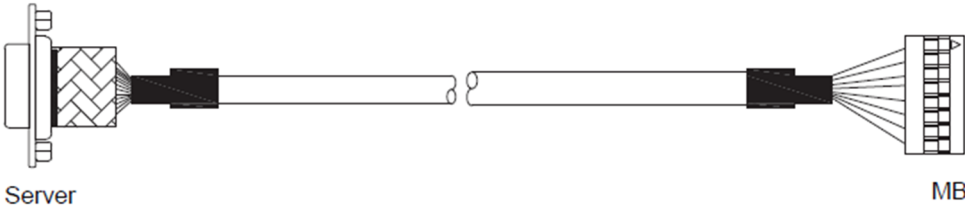


2.6 Chassis Cables

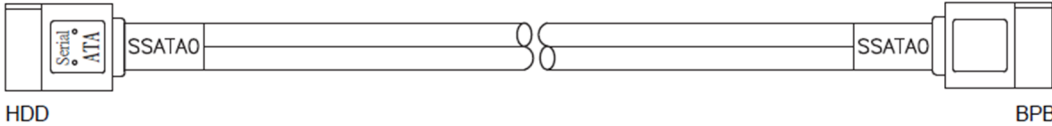
- 1. COM Dongle Cable (300mm) (Quantity: 1)



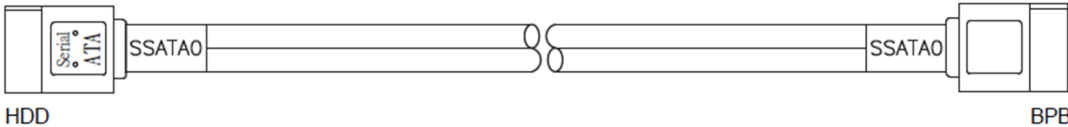
- 2. VGA cable, DB9P/M TO 2*8P HSG CABLE (150mm) (Quantity: 1)



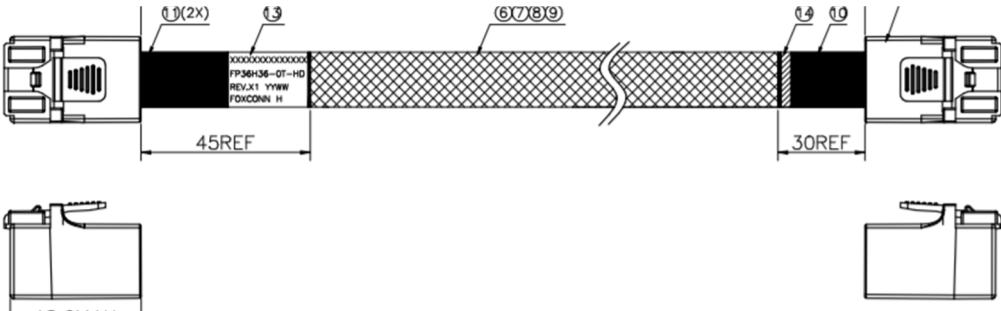
- 3. SATA Cable, SATA-SATA Cable (940mm) (Quantity: 1)



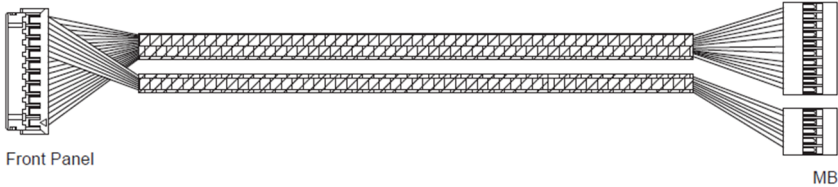
- 4. SATA Cable, SATA-SATA Cable (11400mm) (Quantity: 1)



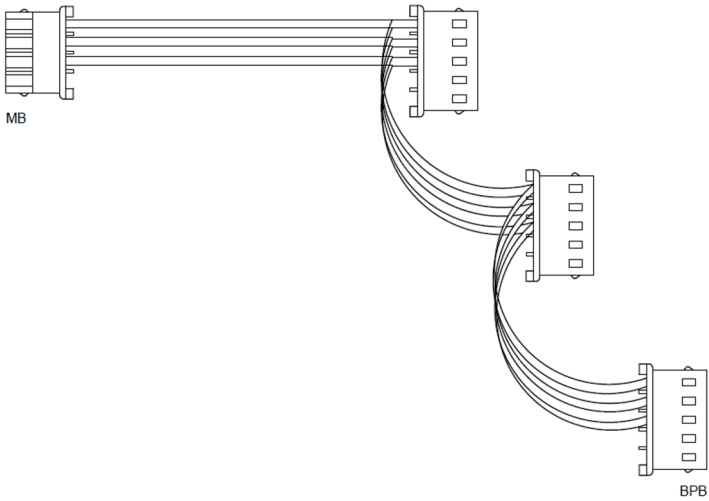
- 5. MINI-SAS-HD Cable (Long part *1 , medium part *1, short part *1)



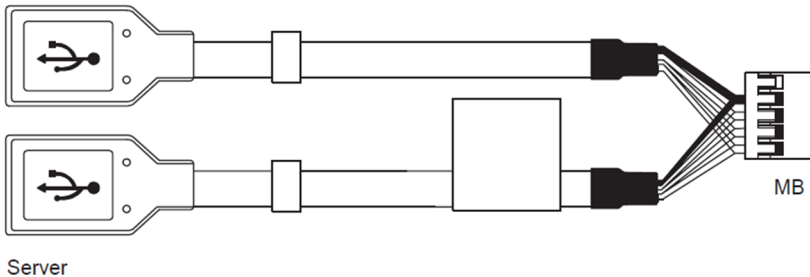
6. Display Cable (1550mm) (Quantity: 1)



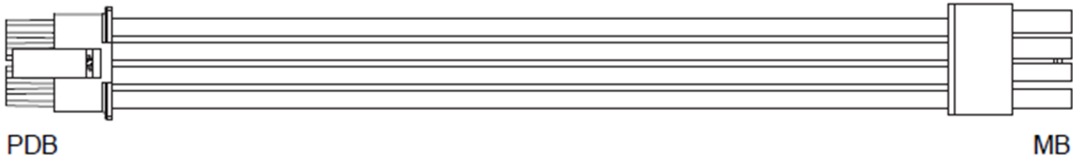
7. SMBus Y Cable (650mm) (Quantity: 1)



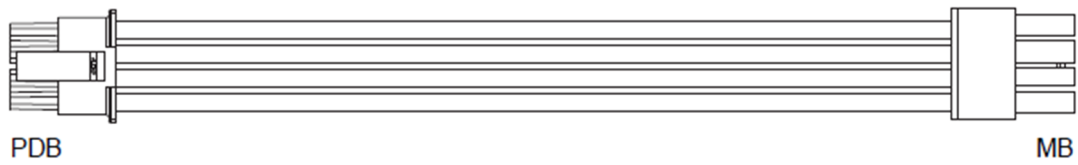
8. USB Cable, USB 2.0 cable (830mm) (Quantity: 1)



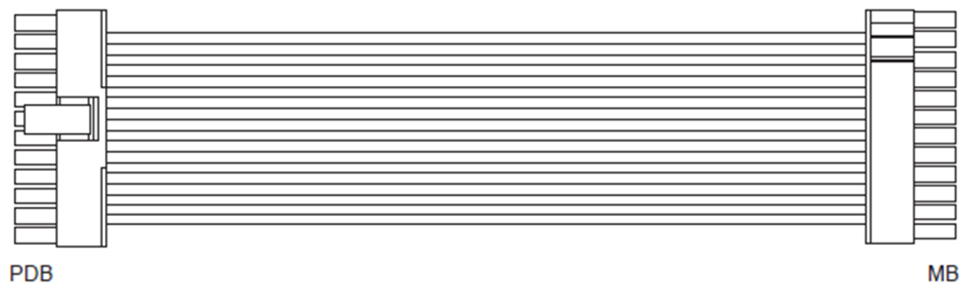
9. Power Cable, 8P CPU1 power (95mm) (Quantity: 1)



10. Power Cable, 8P CPU2 power (500mm) (Quantity: 1)



11. Power Cable, 24P main power (350mm) (Quantity: 1)



Contact Info

MB E.E. and System Engineer– Leo Chang

E-Mail: Leo6_Chang@asrockrack.com

Installation Guide Author – Fenn Lin

E-Mail: Fenn_Lin@asrockrack.com

Project Owner and Team Leader – Kai Yang

E-Mail: Kai6_Yang@asrockrack.com