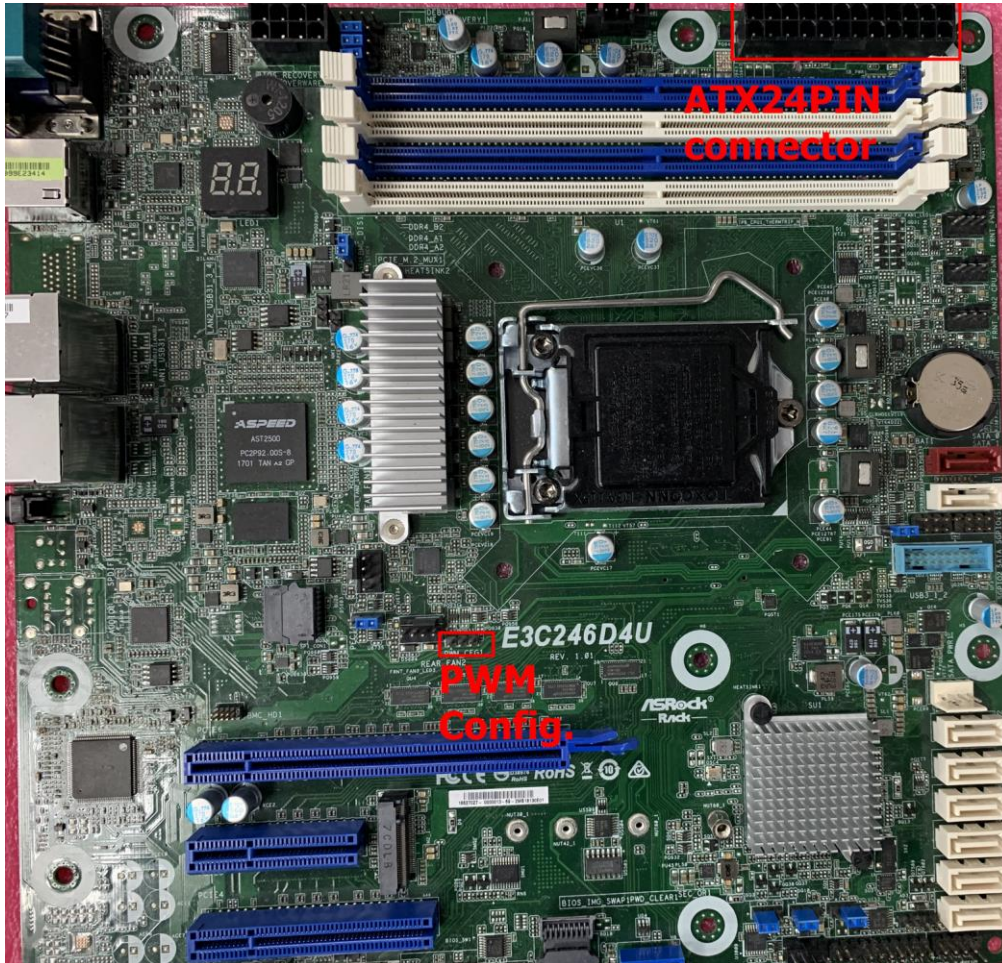
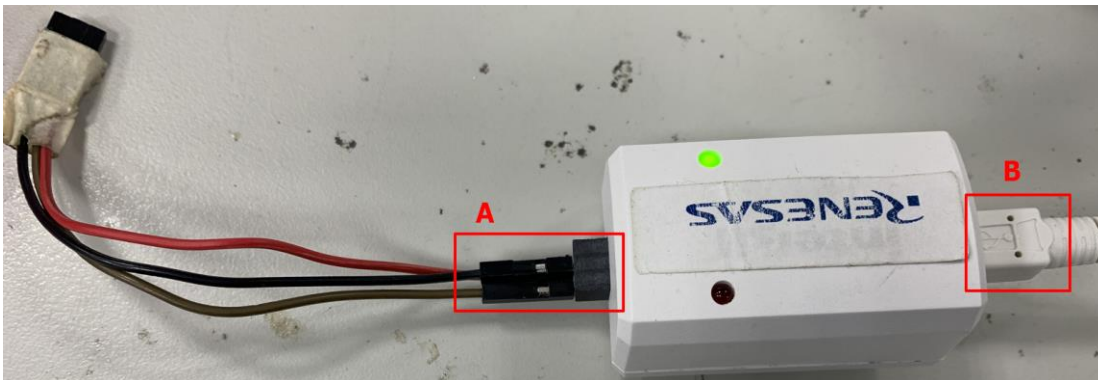


Intersil PWM Firmware Update SOP

MB: E3C246D4U



PWM Dongle:

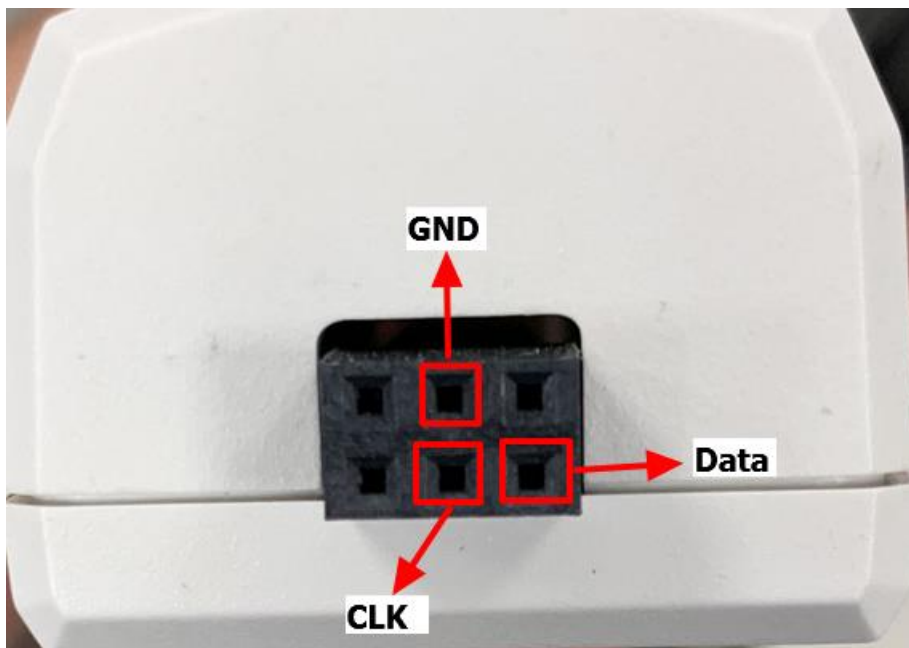
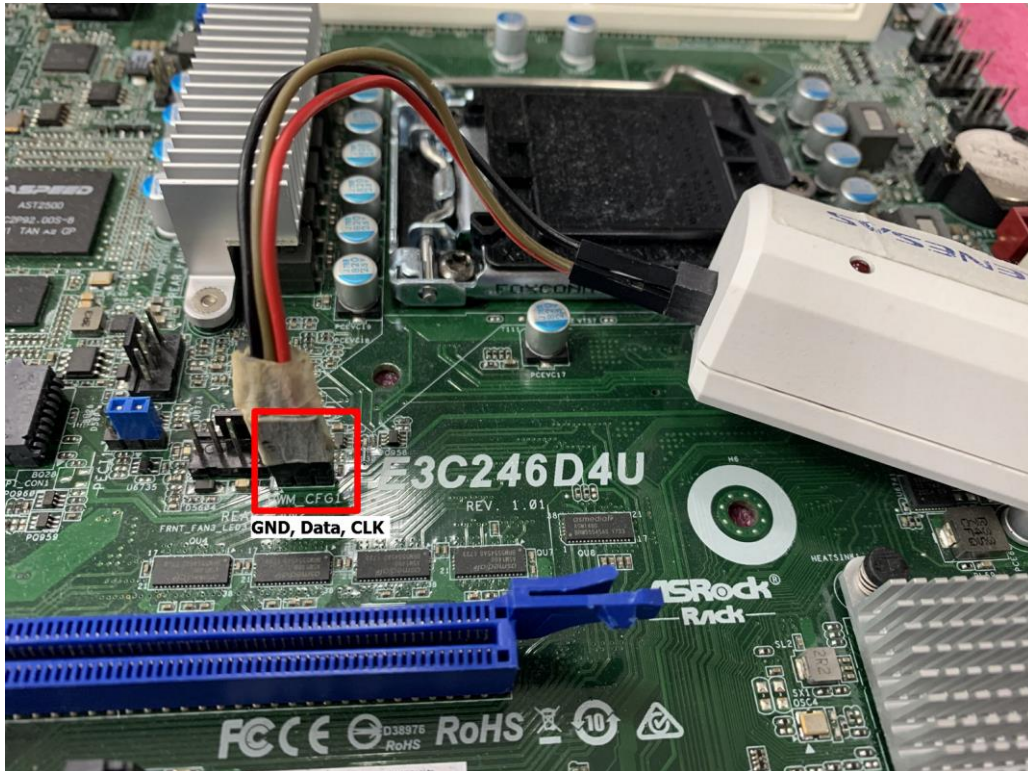


Step1.

- a. Connect ATX24PIN connector with power supply (only 24pin connector)
- b. Connect PWM dongle 'B' with USB port of computer
- c. Connect PWM dongle 'A' with MB PWM Config. as below

Note1. : Pin define from left to right → **GND**, **Data**, **CLK**

Note2. : The pin define of PWM dongle as below



Step2.

- a. Turn on power supply (AC_ON)

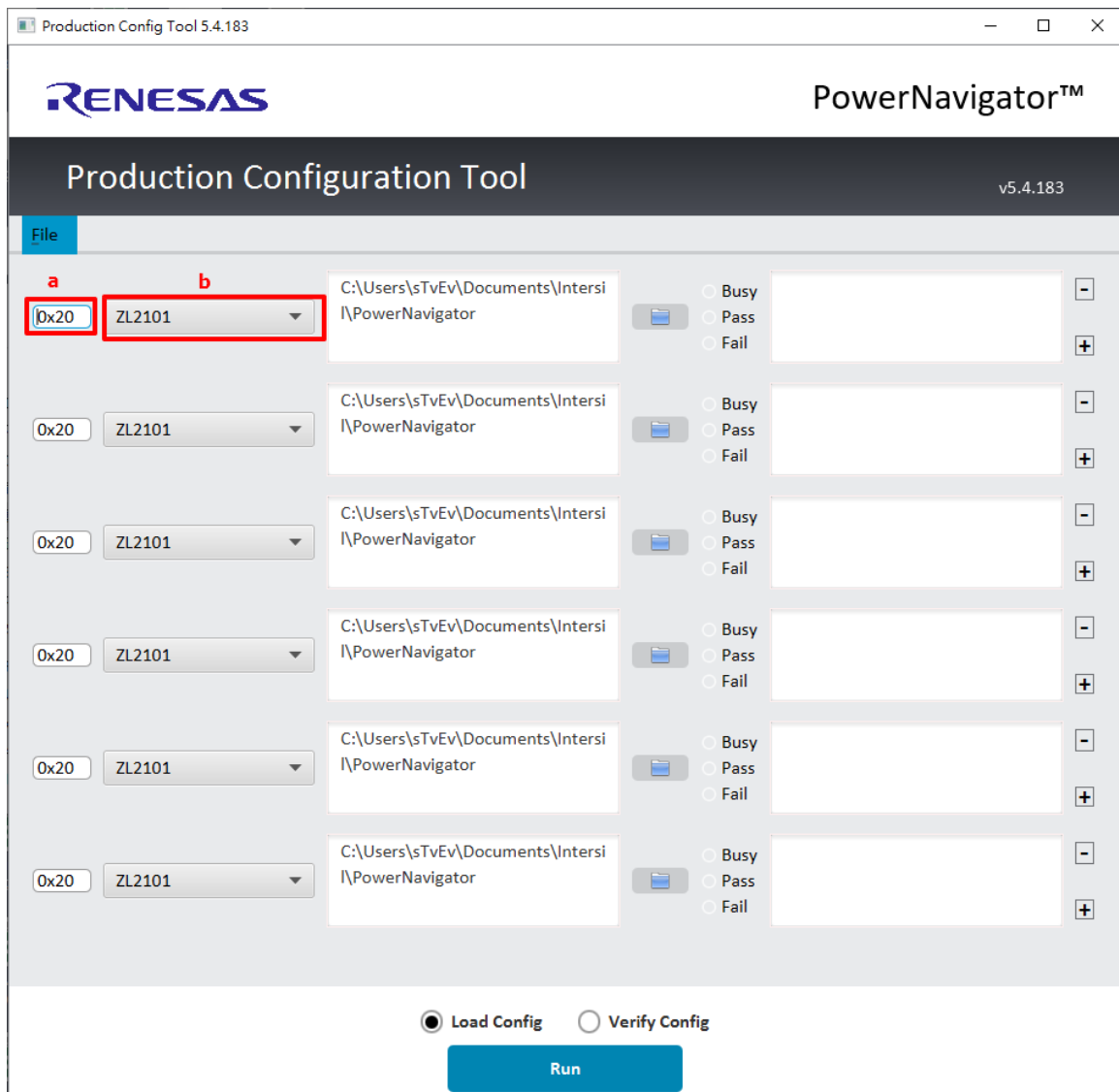
Step 3

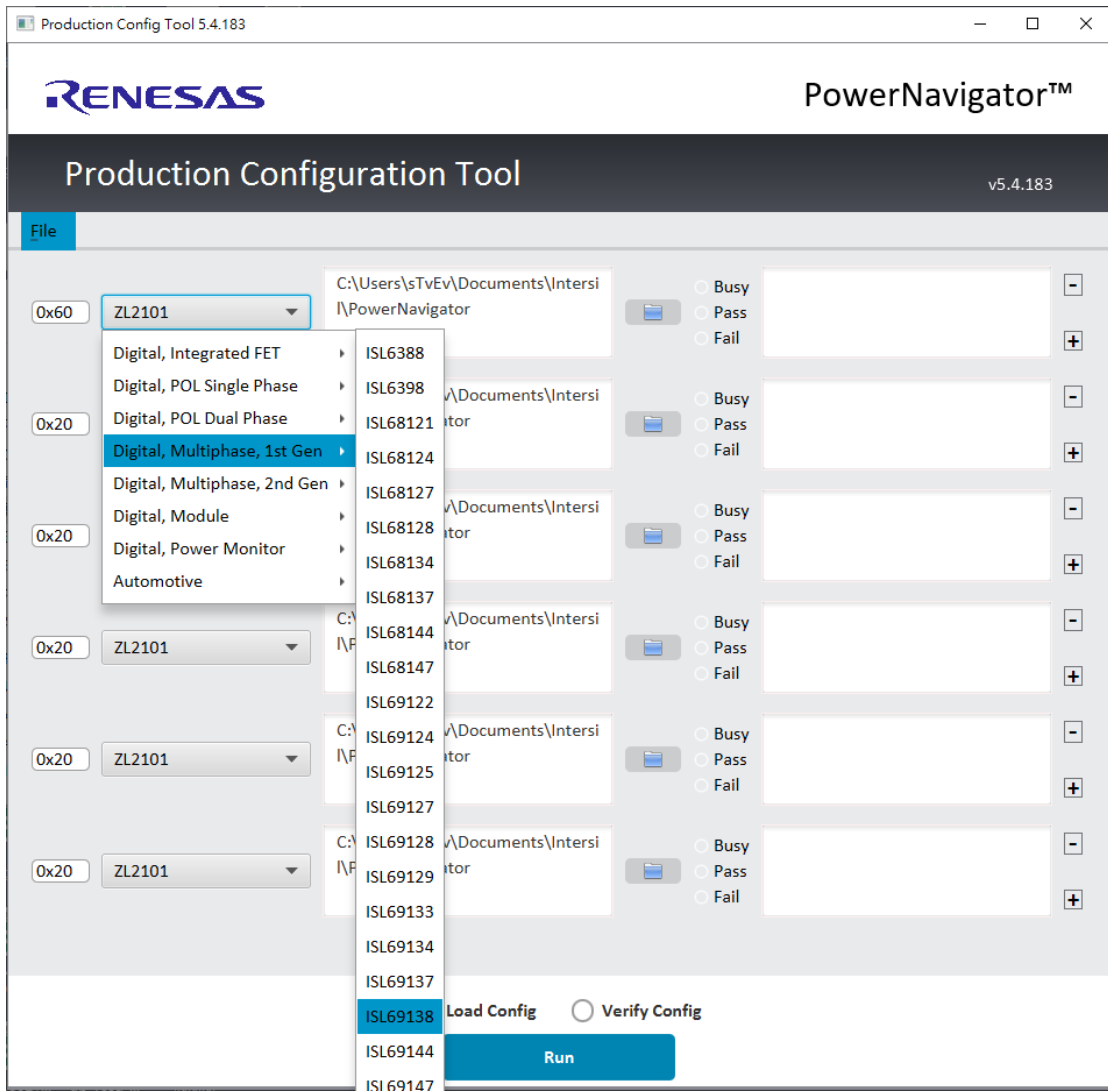
- a. Launch Production Config Tool



Step4.

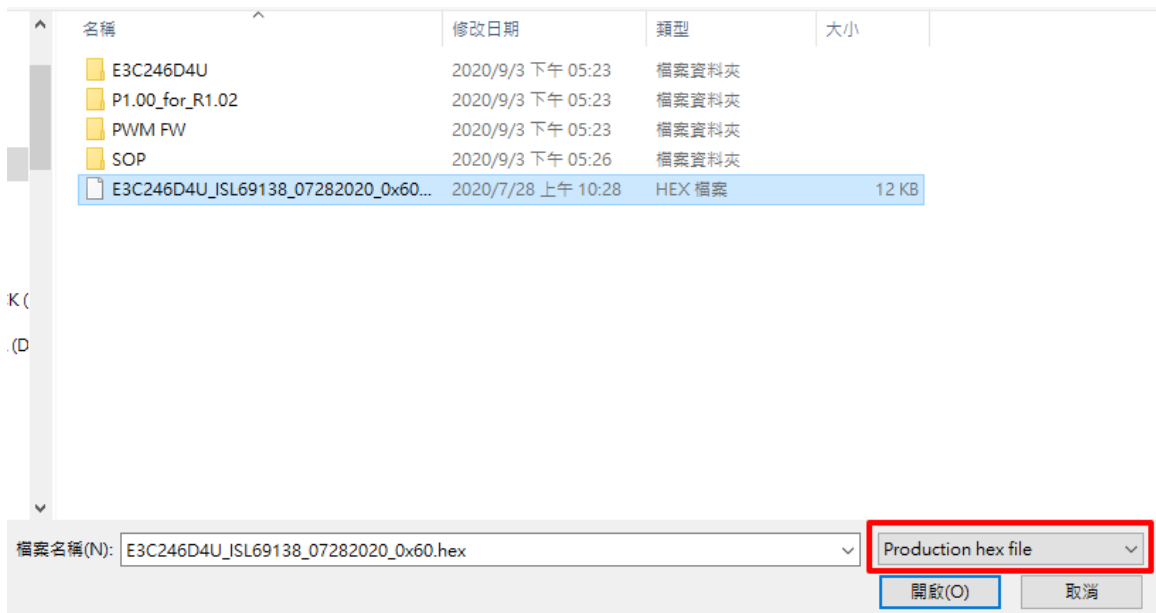
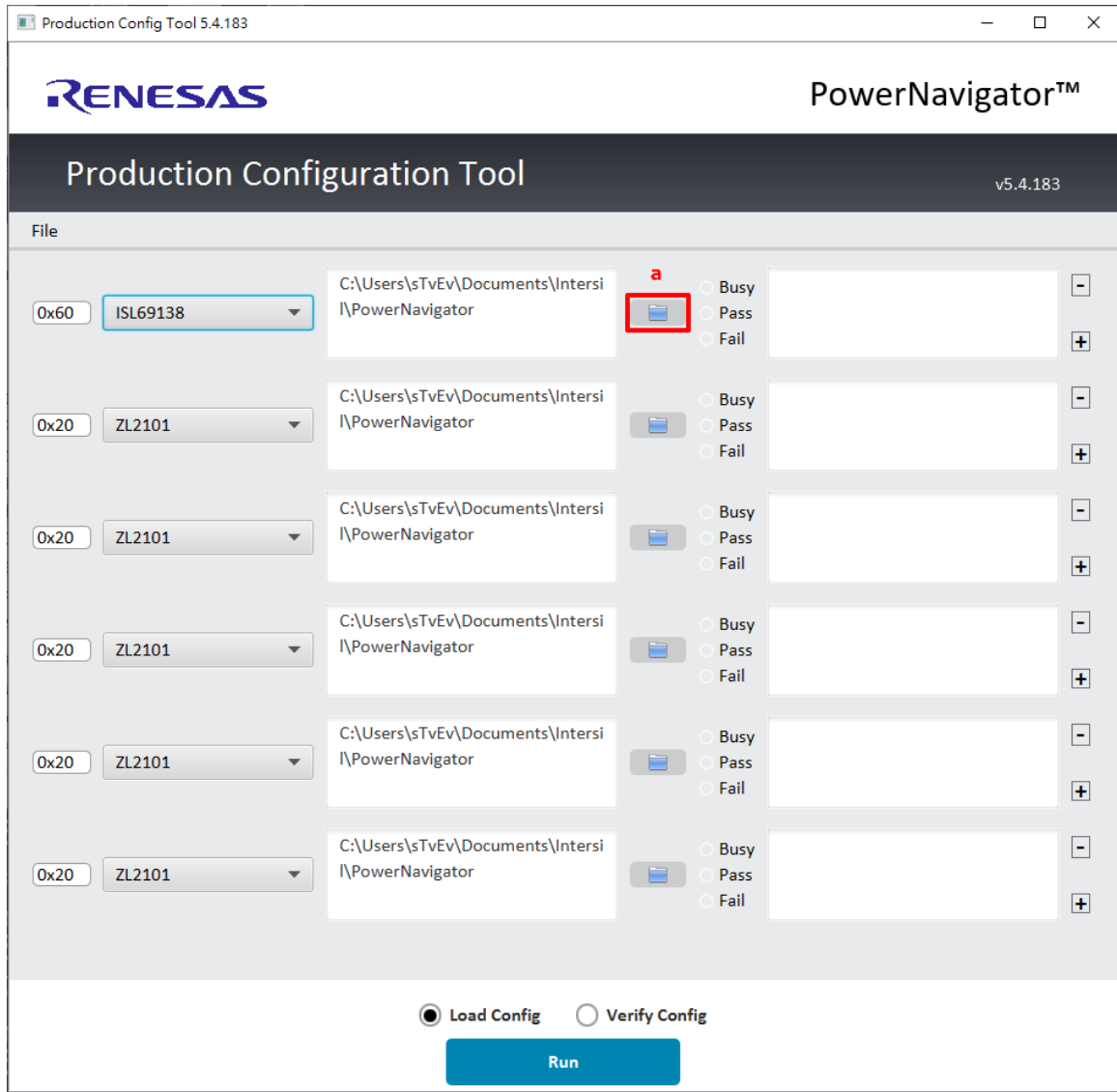
- a. 0x20 → 0x60
- b. ZL2101 → ISL69138





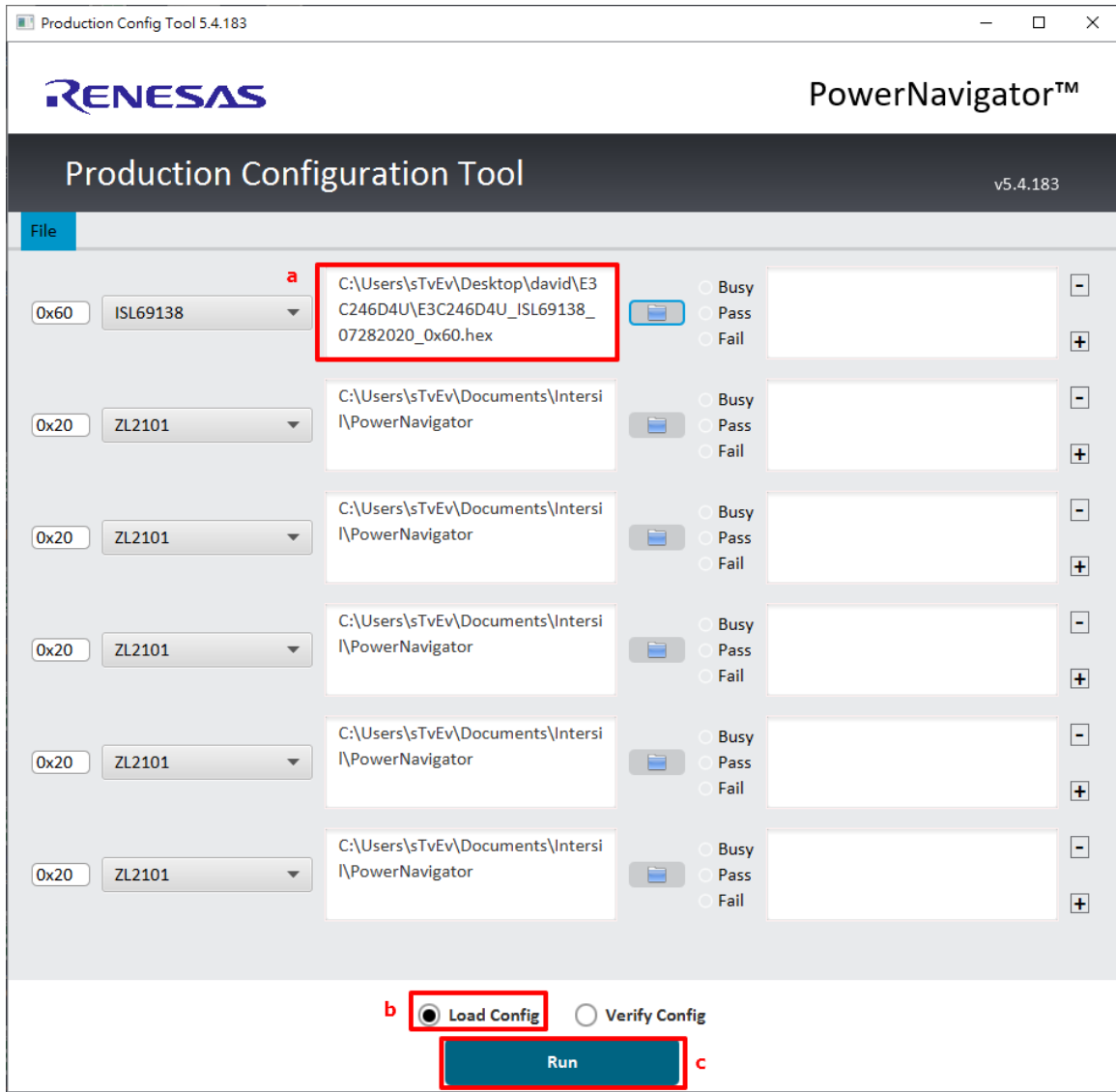
Step5.

- a. Open *.Hex file



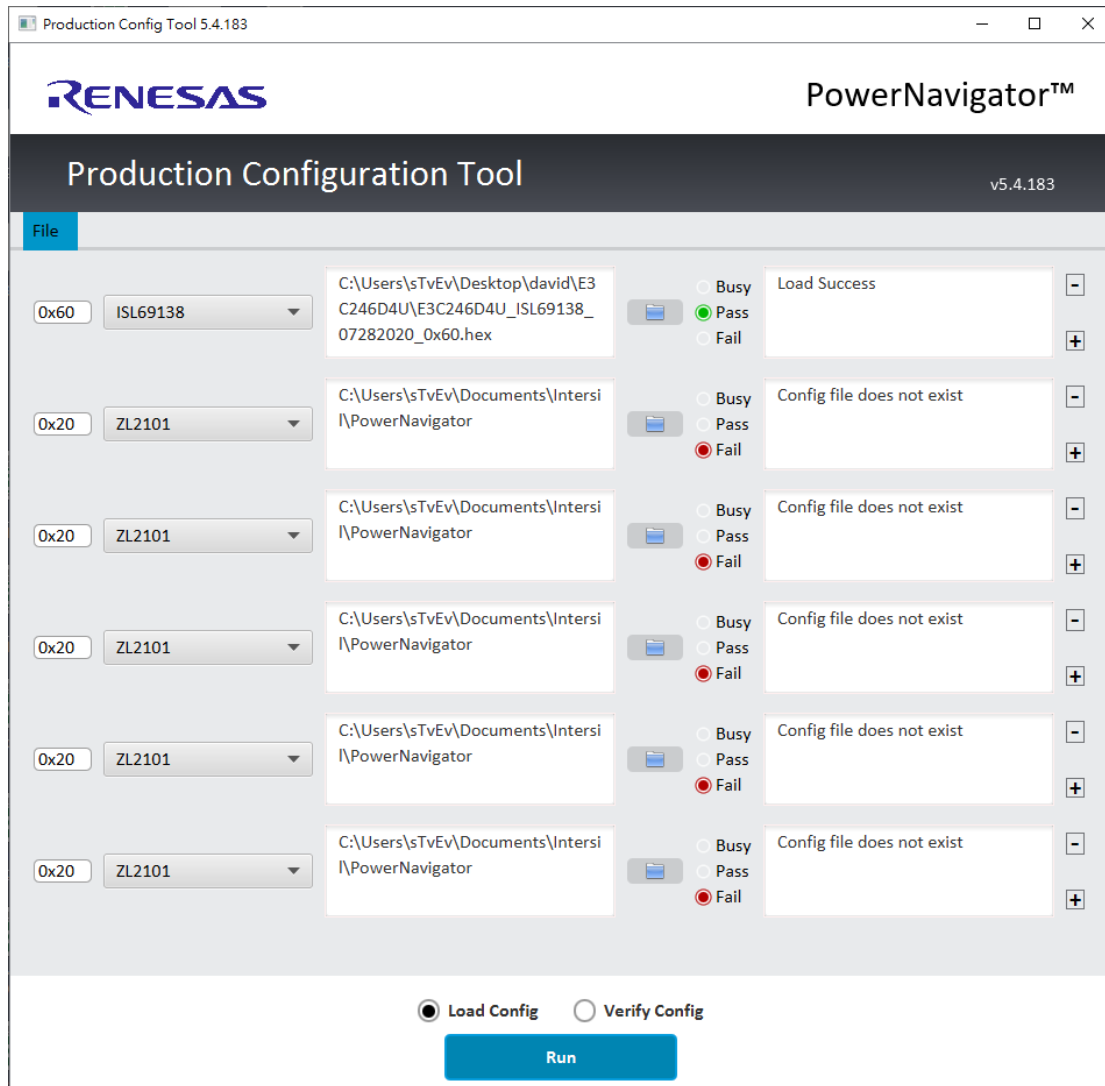
Step6.

- a. Make sure the *.Hex file is correct
- b. Choose 'Load Config.'
- c. Click the 'RUN' button



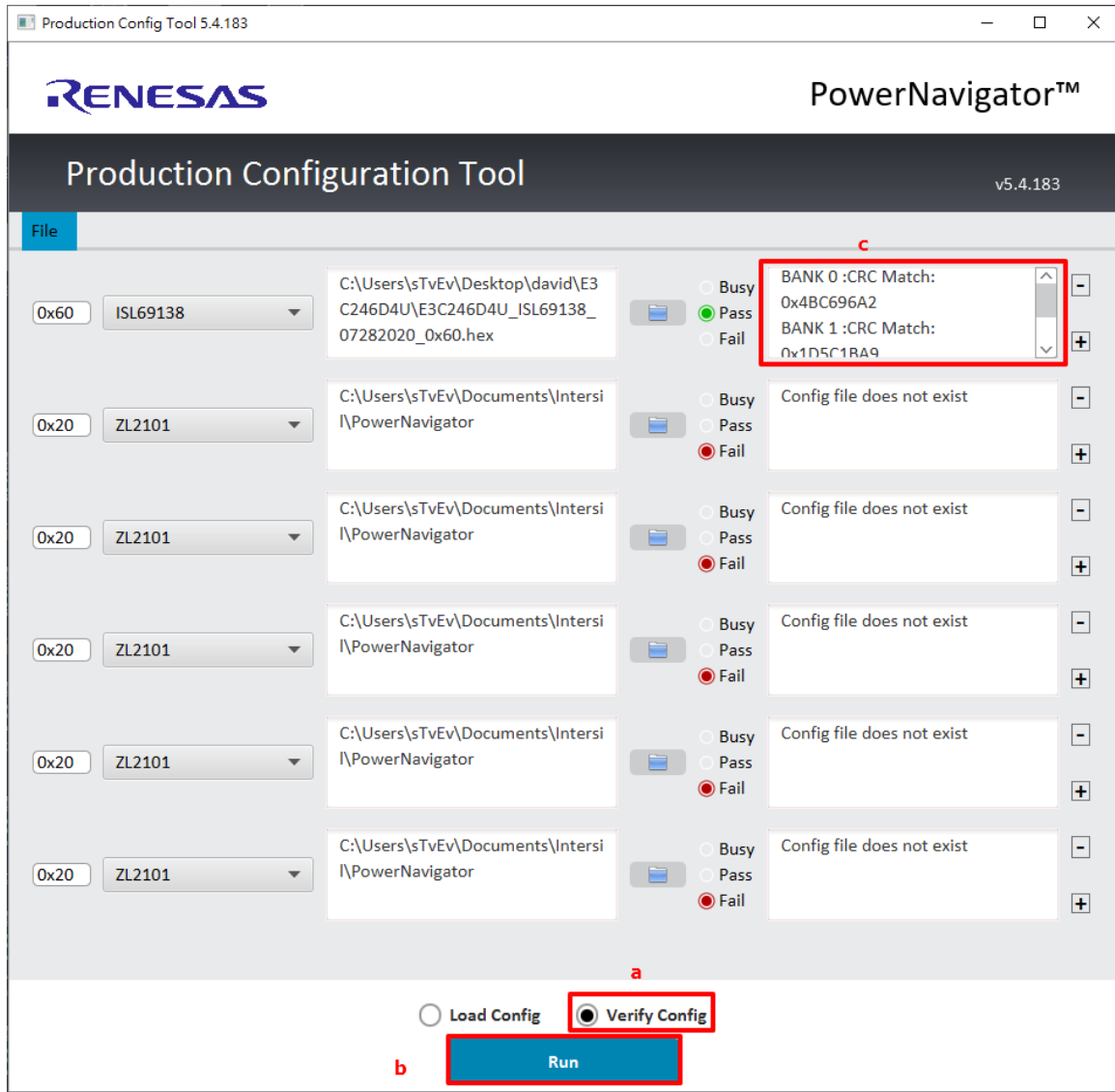
Step7.

- a. If success, it will show 'Load Success'



Step8.

- a. Choose 'Verify Config'
- b. Click the 'RUN' button
- c. Check the CRC is match or not



Support List:

1. Intersil Gen1 digital PWM
ISL69138, ISL69127, ISL69125, ISL69147, ISL69144
2. Intersil Gen2 digital PWM
ISL69225, ISL69255, ISL69269, ISL69248, ISL69247, ISL69243